



Lake
Baroon
Catchment
Care
Group

Walkers Creek Restoration

A project by the Lake Baroon Catchment Care Group

Walkers Creek Restoration is a collaboration between the Lake Baroon Catchment Care Group, Sunshine Coast Regional Council, Seqwater and the landowners, the Hopper family.

Through a combination of hard and soft engineering solutions, the project will reduce the amount of sediment, nutrients and pathogen inputs into Walkers Creek.

On-ground projects such as Walkers Creek Restoration, are an effective method of improving water quality in the Lake Baroon catchment and ultimately the water supply of the Sunshine Coast.



The Hopper family run 130 Guernsey cows and more than 100 goats on their 63 hectare property. The property is located in the Walkers Creek catchment—a sub-catchment of the larger Lake Baroon catchment.

Several pollution hot spots have been identified in this catchment, and despite the stable geology, the catchment contributes a large nutrient and sediment load into the Lake Baroon catchment (*more than 98% of samples exceeded guideline levels [CSIRO SEDNET 2002]*).

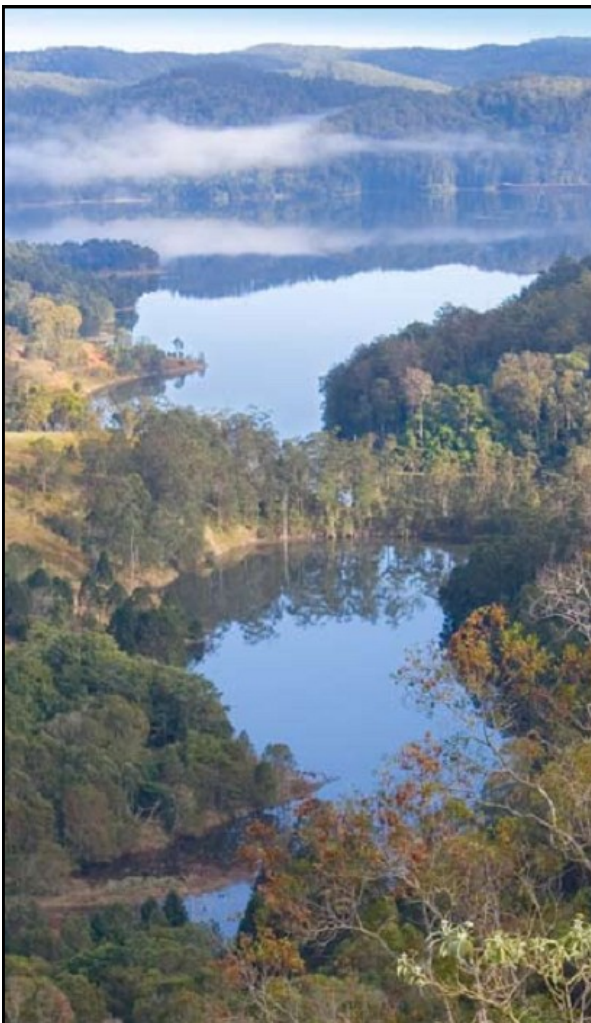
Heavy rain, highly erodible soils and unlimited stock access have left the farm severely eroded in places and reduced farm productivity.

The completion of a Property Management Plan audited the environmental, social and economic potential of the dairy operation, and set priorities and actions addressing improved management.

Lake Baroon Catchment Care Group developed a funding proposal based on these actions.

Lake Baroon Catchment Care Group (LBCCG) is a not for profit community group which focuses on improving the health of the waterways flowing into Lake Baroon.

Seqwater supports LBCCG to implement on-ground works that promise water quality benefits. Seqwater manages Lake Baroon and the water treatment plant at Landers Shute.



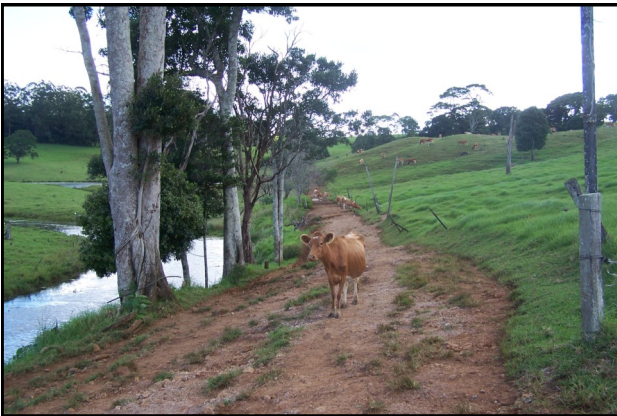
Project Activities



The approach to the dairy had become severely degraded. Partial concreting had left a substantial drop-off which was dangerous to stock. Heavy rainfall washed sediment, nutrients and pathogens into Walkers Creek.



By concreting the dairy approach, the movement of stock was made easier and faster, but also allows the efficient removal of stock waste material which can then be used on paddocks as fertiliser.



The many stock laneways on the property had become rutted and difficult to traverse. The proximity to Walkers Creek meant heavy rainfall would wash sediment, nutrients and pathogens into the waterway.



Hardening of the laneways with road base improves productivity and safety. Erosion is minimised and fencing of the laneways allows grass to grow to edge of road base. Run-off to Walkers Creek is minimised.



With the fencing of Walkers Creek, alternative water supply was provided through a system of troughs. Stock water quality is improved by providing a clean source, ultimately improving the health and productivity of the herd.

By eliminating the waterway as a water source, water quality in the creek will improve. The fenced riparian zones can be grazed during drier periods when damage to the bed and banks of the creek is minimised.