

Lake Baroon Catchment Care Group

Project Manager Report

August 13, 2015



Current Projects Expenditure & Status

Note: figures may not correspond with Financial Reports

			Income		Expenditure	
Number	Project Name	Status	2014/15 fund	Other	ince last meetin	2015-16
0708-005	Upper Small Creek Rehabilitation Project	Maintenance				
0809-001	Walkers Creek Restoration Stage 1	Maintenance, sign				
0809-005	Rob Cork Dairy Pad Project	Completed, sign				
1011-003	Arley Creek Wetlands Project Year 2	OSW				
1011-011	Willow Creek Stormwater Project	Maint.; SUSPENDED				
1314-001	MCP Riparian Fencing Stage 3*	Completed		\$ 3,492.00		
1314-009	Cavanagh -13/14 Seqwater Landslide Prog.	Completed				
1314-010	Wittacork -13/14 Seqwater Landslide Prog.	Completed				
1314-011	Ling Landslip Remediation	Completed, minor maint to continue		\$ 7,500.00	\$ 713.80	\$ 1,165.10
1415-002	Upper Lawley Creek Restoration Year 4*	Maintenance	\$ 2,602.00			\$ 833.00
1415-003	Restoring Bridge Creek Year 3*	Maintenance	\$ 4,586.00			
1415-004	Farmhouse Mac Waterway Cross & Weeds	Planning stage	\$ 24,675.00		\$ 3,240.00	\$ 3,240.00
1415-005	Upper Obi Obi Creek Restoration Year 4*	Maintenance	\$ 4,923.00		\$ 5,167.00	\$ 5,854.00
1415-006	Obi Obi Creek Fencing & Revegetation	Watering point under construction	\$ 10,980.00	\$ 327.24	\$ 136.30	\$ 136.30
1415-008	Erowal Riparian Fencing & OSW Stage 3*	OSW extend completed, weed mgt continuing	\$ 5,255.00			\$ 262.50
1415-009	Nadi Lane Livestock & Erosion Management	Completed, further activities underway	\$ 12,438.00	\$ 3,758.90		\$ 3,460.00
1415-010	Walkers Creek Rehabilitation & Enhancement	2014/15 stage completed; invoice landholder	\$ 15,470.00			
1415-016	WalkersCreek Riparian Program (Harris)	OSW commenced	\$ 10,332.00			\$ 2,909.08
1415-017	Mid Obi Riparian Corridor Protection (EEG)	Weed management commenced	\$ 10,474.00	\$ 29,000.00	\$ 4,376.80	\$ 11,609.97
1415-018	Landslide Remediation Program 14/15	Completed, Project Mgt remains		\$ 26,595.00	\$ 1,675.00	\$ 5,506.00
1415-020	MCP Wetland Fencing	NON-SEQWATER PROJECT; Completed		\$ 4,372.90		
1415-022	Alcorn Creek Off Stream Watering (Crick)	Completed	\$ 14,297.00			\$ 10,015.00
1415-023	Obi Waterfall Project	Planning stage, Council funding confirmed	\$ 9,324.00			
Totals			\$125,356.00	\$ 75,046.04	\$ 15,308.90	\$ 44,990.95
* Ongoing projects approved in previous years						



Projects –
Farmhouse Macadamias Waterway
Crossings & Weed Management

- Weed management commenced (mechanical/hand removal)
- Site has good natural regeneration
- Follow up spot spraying (vine weeds) to occur in September



Projects –
Ling Landslip Remediation

- Maintenance continuing
- Site is still being monitored by QUT and others



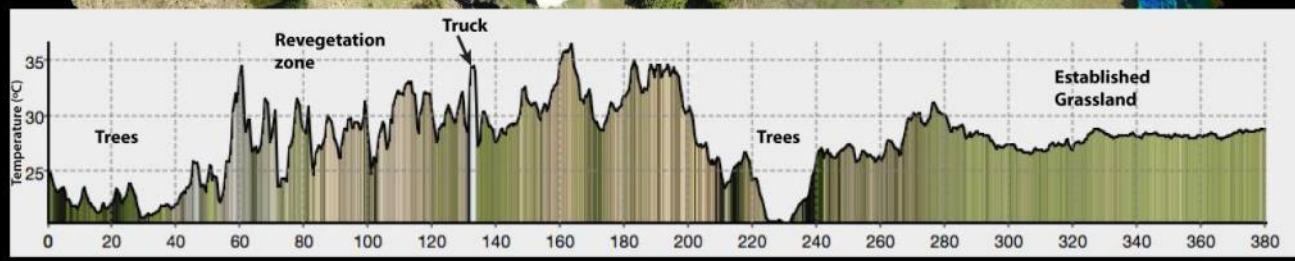
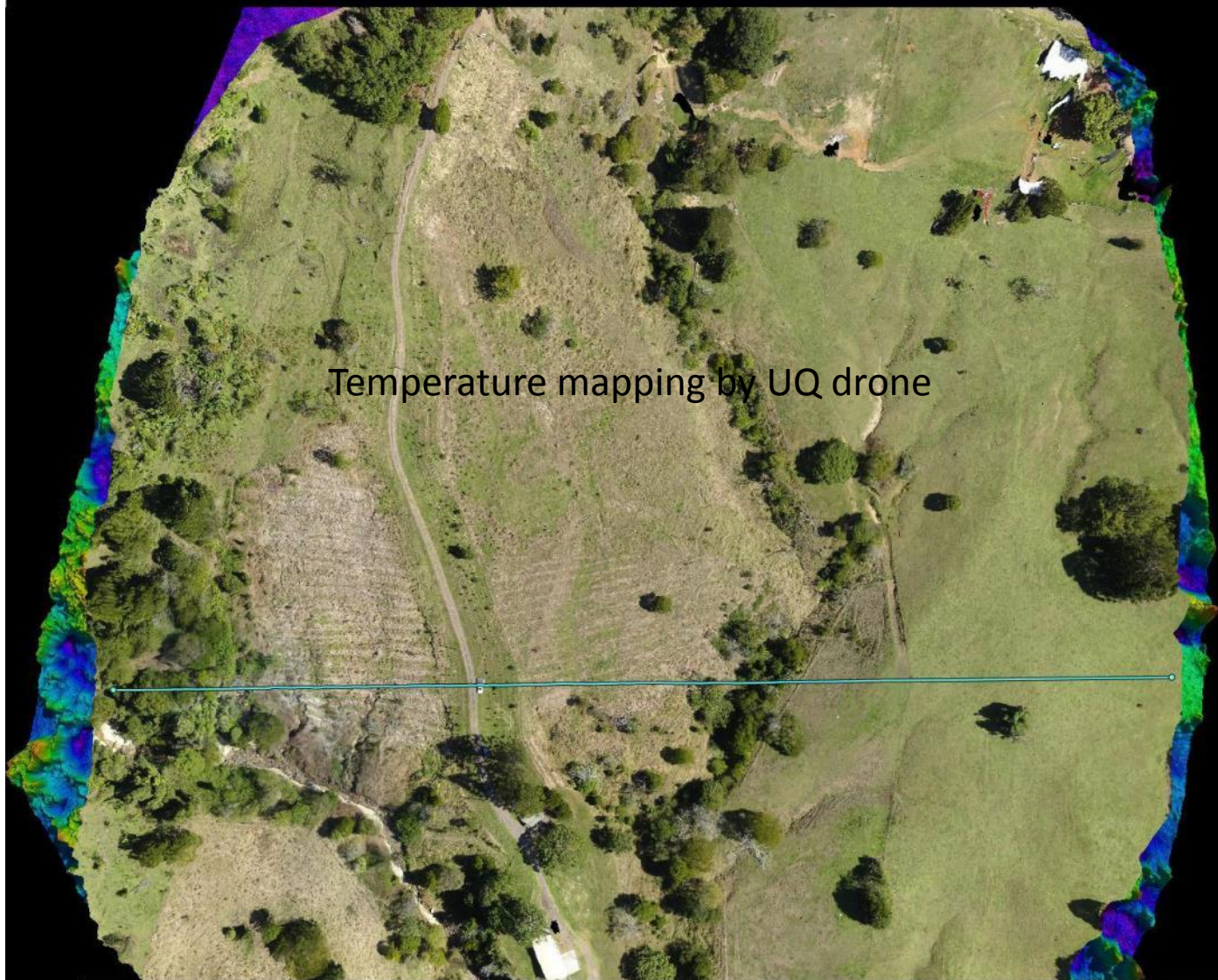
Local Maleny photographer drone



UQ drone



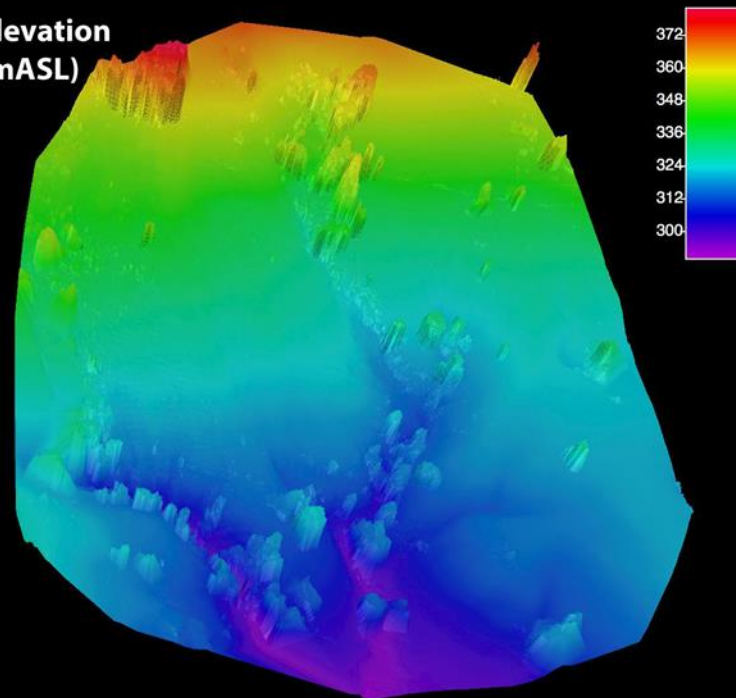
Aerial view of Ling Landslip Remediation



RGB

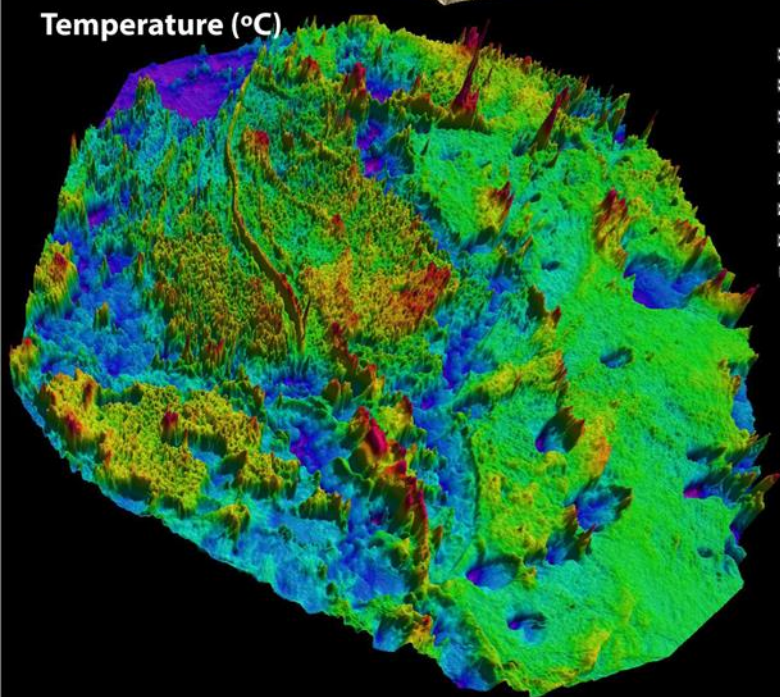


Elevation
(mASL)



Vert. ex
x2

Temperature (°C)



NDVI

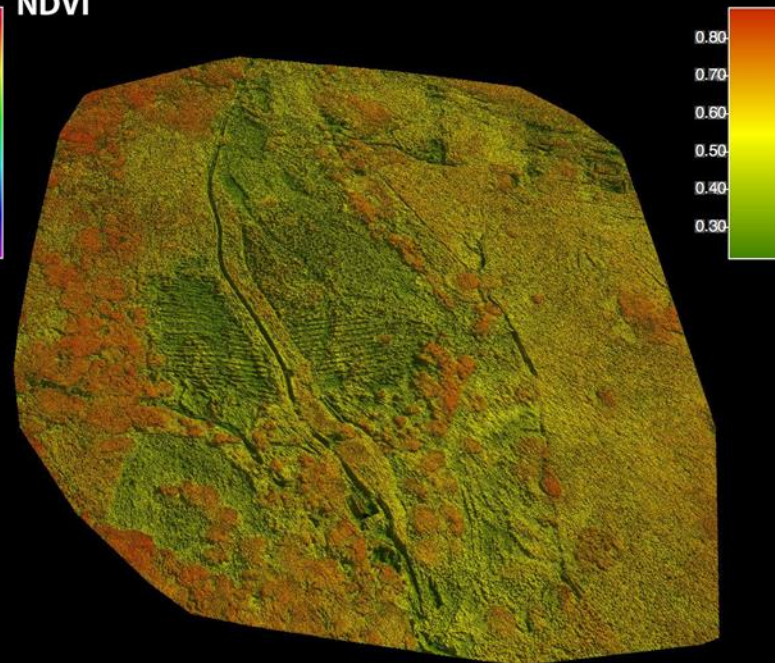




Photo taken by photographer drone



Projects –
Mid Obi Riparian Corridor Protection

nearmap



- weed management continuing
- Conservation Volunteers booked for end of August (planting 100 birdwing vines)

nearmap



Projects – Erowal Riparian Fencing & Off Stream Watering

- Fencing of Walkers Creek completed by agistee Keith Hopper
- Short section of Obi Obi Creek (currently temporarily fenced) to be permanently fenced utilising TAFE





Projects –
2014-15 Seqwater Landslide Remediation program

- Matt working on Final Report
- Seqwater PM Amy Piekkala-Fletcher visited on 7/8/2015 for project close-out



Projects – Obi Obi Creek Fencing & Revegetation(Macleod)

- watering point under construction...still
- currently waiting on more 6 mm chain



2015-16 Annual Investment Strategy Financial Plan

Lake Baroon Catchment Care Group

2015/16 Annual Investment Strategy

- Formerly known as *Priority Strategy for Funding Provided by Seqwater*
- LBCCG Annual Plan
- Updates Ten Year Funding Agreement
 - reports on previous year
 - proposed projects for new financial year
- Prioritisation of projects, properties, activities
- Why LBCCG is a good investment!



Project Development

- Potential to partner with Council & local 'Bushcare' group to fence & revegetate Lawley Creek tributary up stream of Gary Smith
- LBCCG could fund fencing & OSW

Property Information





Project Development

- Lion's Club EEG project has cleared weeds from the Maleny Landsborough Rd, including the thicket of Chinese Elm on south side of road
- Elm is a priority species for upcoming Seqwater Weed program
- The 'parent' tree lies on Uniting Church/Erowal property on north side of road
- Opportunity to remove the threat





Other

- Assisting to organise 2015 Landcare Conference field trip with visits to:
 - Mary Cairncross Scenic Reserve
 - Maleny Dairies
 - Maleny Boardwalk
 - Maleny Trail
 - Unitywater wetland planting site
 - maybe Barung Landcare Nursery
- Seqwater/LBCCG new Agreement meeting



Kenilworth pile fields



Kenilworth pile fields